



Overflow valve for liquids and gases up to 130 °C

Technical Data

Connection	DN 50 - 100
Nominal Pressure	PN 1 - 16
Inlet Pressure	up to 0,02 - 10 bar in 7 setting ranges
K_{VS} -value	32 - 100 m ³ /h
Tightness	acc. VDI/VDE-guideline 2174 (leakage rate $\leq 0.05\%$ of K_{VS} -value)
Design	UV 4.7 with open spring, UV 4.8 with closed spring cap

Description

Medium-controlled overflow valves are simple control valves offering accurate control while being easy to install and maintain. They control the pressure upstream of the valve without requiring pneumatic or electrical control elements.

The UV 4.7 and 4.8 overflow valves are spring-loaded diaphragm-controlled and balanced proportional control valves for large volumes. The valve cone is fitted with a soft seal (up to 130 °C). This bypass valve is manufactured from deep-drawn stainless steel featuring excellent corrosion resistance.

The inlet pressure to be controlled is balanced across the diaphragm by the force of the valve spring (set pressure). If the inlet pressure rises above the set pressure, the valve opens. With decreasing inlet pressure the valve control orifice reduces, when the pipeline is depressurised the valve is closed. Rotating the adjusting screw clockwise increases the inlet pressure.

The UV 4.7 and 4.8 require a pilot line (to be installed on-site).

STANDARD EQUIPMENT

- All stainless steel construction
- Pilot line connection

OPTIONS

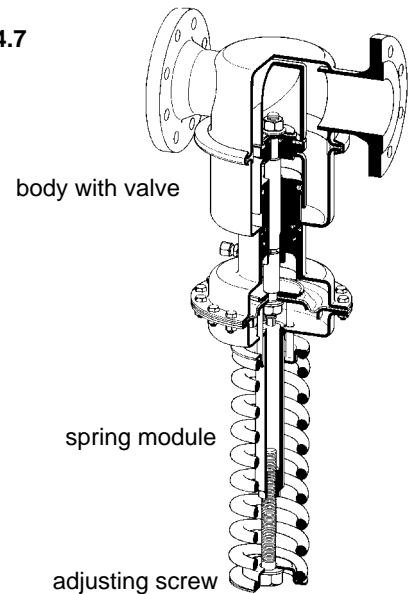
- For toxic or hazardous media: additional leakage line connection. Must be installed with a leakage line capable of draining leaking medium safely and without pressure
- Various diaphragm and seal materials suitable for your medium
- Special connections: Aseptic, ANSI or DIN flanges, welding spigots; other connections on request
- Special versions on request

Operating instructions, Know How and Safety instructions must be observed.

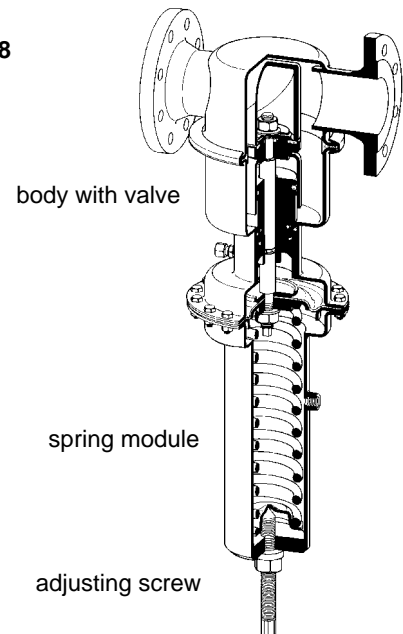
The pressure has always been indicated as overpressure.

We reserve the right to alter technical specifications without notice.

UV 4.7



UV 4.8



K_{VS} -values [m ³ /h]			
nominal diameter DN			
50	65	80	100
32	50	80	100

Setting Ranges [bar], Nominal Pressure						
4.5 - 10	2 - 5	0.8 - 2.5	0.2 - 1.2	0.1 - 0.6	0.02 - 0.25	0.02 - 0.15
PN 16	PN 10	PN 6	PN 2,5	PN 1	PN 1	PN 1

Pressure Control Valves

UV 4.7, 4.8

Overflow valve for liquids and gases up to 130 °C

Materials	
Temperature	130 °C
Body	CrNiMo-steel
Diaphragm Housing	CrNiMo-steel
Bonnet	CrNiMo-steel
Spring	CrNi-steel
Valve Seal	EPDM optional FPM
Diaphragm	EPDM optional FPM
O-ring	EPDM optional FPM

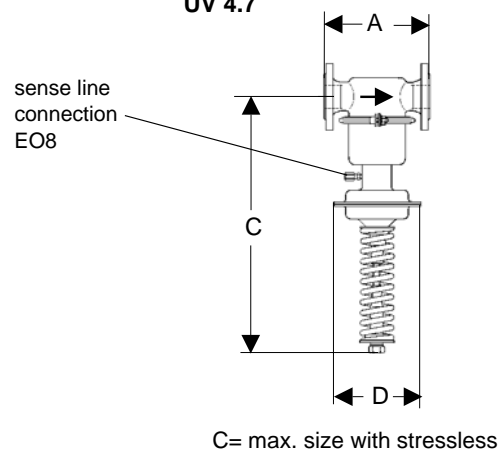
Dimensions [mm]								
pressure range bar	DN 50				DN 65			
	A	C	C ₁	D	A	C	C ₁	D
4.5 - 10	230	610	750	220	290	750	890	220
2 - 5	230	610	750	220	290	750	890	220
0.8 - 2.5	230	610	750	220	290	750	890	220
0.2 - 1.2	230	610	750	270	290	750	890	270
0.1 - 0.6	230	610	750	360	290	750	890	360
0.02 - 0.25	230	500	640	360	290	640	780	360
0.02 - 0.15	230	500	640	500	290	640	780	500

Dimensions [mm]								
pressure range bar	DN 80				DN 100			
	A	C	C ₁	D	A	C	C ₁	D
4.5 - 10	310	750	890	220	350	750	890	220
2 - 5	310	750	890	220	350	750	890	220
0.8 - 2.5	310	750	890	220	350	750	890	220
0.2 - 1.2	310	750	890	270	350	750	890	270
0.1 - 0.6	310	750	890	360	350	750	890	360
0.02 - 0.25	310	640	780	360	350	640	780	360
0.02 - 0.15	310	640	780	500	350	640	780	500

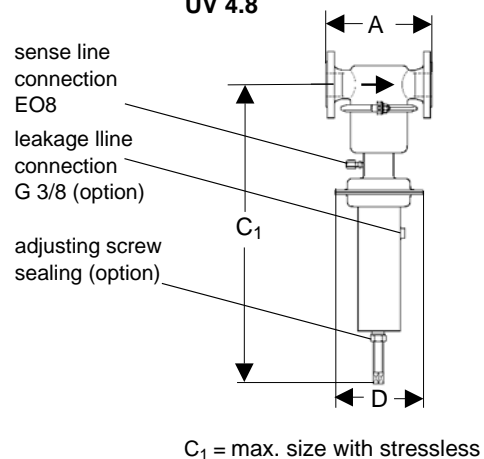
Weights [kg]				
pressure range bar	nominal diameter DN			
	50	65	80	100
4.5 - 10	30	31	33	35
2 - 5	30	31	33	35
0.8 - 2.5	30	31	33	35
0.2 - 1.2	33	34	36	38
0.1 - 0.6	36	37	39	41
0.02 - 0.25	37.5	38.5	38.5	38.5
0.02 - 0.15	37.5	38.5	38.5	38.5

Special designs on request.
The pressure has always been indicated as overpressure.
Mankenberg reserves the right, to alter or improve the designs or specifications of the products described herein without notice.

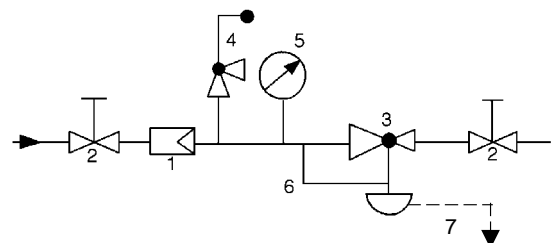
UV 4.7



UV 4.8



Recommended Installation



- | | |
|------------------|------------------------------|
| 1 Strainer | 5 Pressure Gauge |
| 2 Shutoff Valves | 6 Sense Line EO8 |
| 3 Overflow Valve | 7 Leakage Line G 3/8(option) |
| 4 Safety Valve | |

WIR REGELN DAS SCHON
FIRMLY IN CONTROL

MANKENBERG