

Pressure reducer for liquids and gases up to 130 °C



## Technical Data

Connection	DN 50 - 100
Nominal Pressure	Inlet PN 16
	Outlet PN 1 - 10
Inlet Pressure	up to 16 bar
Outlet Pressure	0.02 - 5 bar in 6 setting ranges
$K_{VS}$ -value	32 - 100 m <sup>3</sup> /h
Tightness	acc. VDI/VDE-guideline 2174 (leakage rate $\leq 0.05$ % of $K_{VS}$ -value)

## Description

Medium-controlled pressure reducers are simple control valves offering accurate control while being easy to install and maintain. They control the pressure downstream of the valve without requiring pneumatic or electrical control elements.

The DM 664 pressure reducing valve is a diaphragm-controlled spring-loaded and balanced proportional control valve for large volumes of non-hazardous media.

This pressure reducer is manufactured from deep-drawn stainless steel featuring excellent corrosion resistance. The valve cone is fitted with a soft seal (up to 130 °C).

The outlet pressure to be controlled is balanced across the diaphragm by the force of the valve spring (set pressure). As the outlet pressure rises above the pressure set using the adjusting screw, the valve cone moves towards the seat and the volume of medium is reduced. As the outlet pressure drops the valve control orifice increases; when the pipeline is depressurised the valve is open. Rotating the adjusting screw clockwise increases the outlet pressure.

The DM 664 pressure reducer requires a pilot line (to be installed on-site).

## STANDARD EQUIPMENT

- All stainless steel construction
- Quick-release body clamp ring
- Pilot line connection

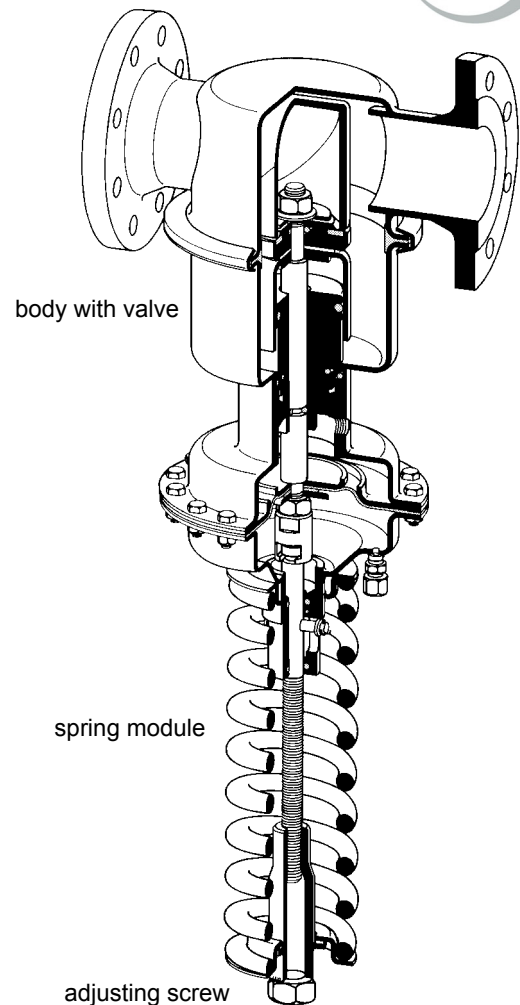
## OPTIONS

- Pressure gauge connection
- For toxic or hazardous media: additional leakage line connection. Must be installed with a leakage line capable of draining leaking medium safely and without pressure
- Various diaphragm and seal materials suitable for your medium
- Special connections: Aseptic, ANSI or DIN flanges, welding spigots; other connections on request
- Special versions on request

Operating instructions, Know How and Safety instructions must be observed.

The pressure has always been indicated as overpressure.

We reserve the right to alter technical specifications without notice.



$K_{VS}$ -values [m <sup>3</sup> /h]			
nominal diameter DN			
50	65	80	100
32	50	80	100

Setting Ranges [bar], Nominal Pressure PN			
0,02 - 0,15	0,02 - 0,25	0,1 - 0,6	0,2 - 1,2
16/1	16/1	16/1	16/2,5

Setting Ranges [bar], Nominal Pressure PN		
0,8 - 2,5	2 - 5	4 - 8
16/6	16/10	16/16

Pressure reducer for liquids and gases up to 130 °C

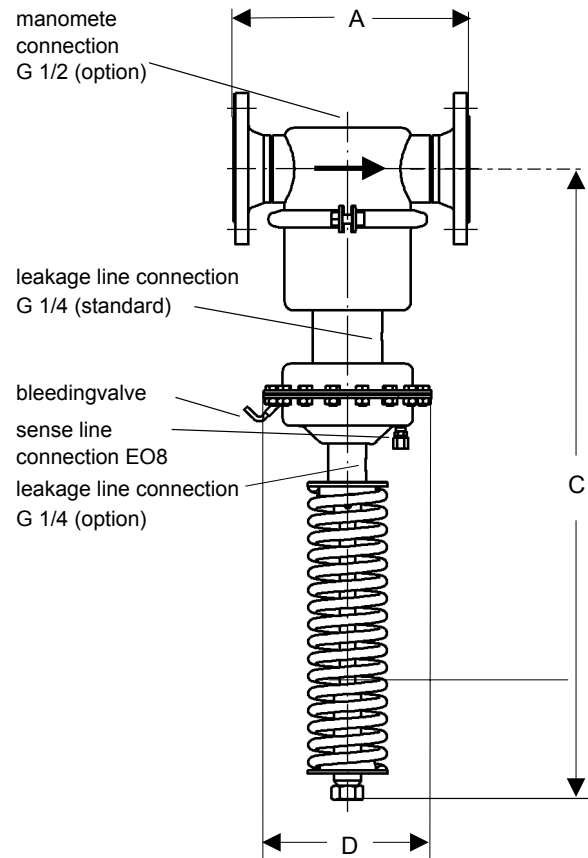


Materials	
Temperature	130 °C
Body, Diaphragm Housing, Internals	CrNiMo-steel
Spring	CrNi-steel
Valve Seal	EPDM optional FPM or PTFE
Diaphragm	EPDM optional FPM
O-ring	EPDM optional FPM

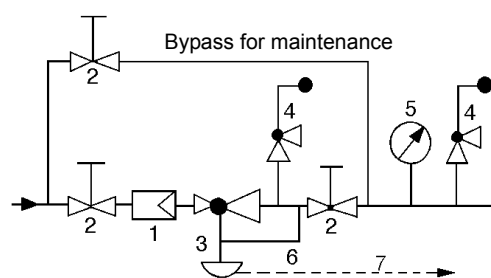
Dimensions [mm]					
pressure range [bar]	size	nominal diameter DN			
		50	65	80	100
all ranges	A	230	290	310	350
	C	650	700	700	700
0.02 - 0.15	D	500	500	500	500
	C	650	700	700	700
0.02 - 0.25	D	360	360	360	360
	C	740	790	790	790
0.1 - 0.6	D	360	360	360	360
	C	740	790	790	790
0.2 - 1.2	D	270	270	270	270
	C	740	790	790	790
0.8 - 2.5	D	220	220	220	220
	C	740	790	790 <td 790	
2 - 5	C	740	790	790	790
	D	220	220	220	220
4 - 8	C	740	790	790	790
	D	220	220	220	220

Weights [kg]				
pressure range [bar]	nominal diameter DN			
	50	65	80	100
0.02 - 0.15	40	41	43	45
0.02 - 0.25	40	41	43	45
0.1 - 0.6	37	38	40	42
0.2 - 5	34	35	37	39
4 - 8	34	35	37	39

Special designs on request.  
The pressure has always been indicated as overpressure.  
Mankenberg reserves the right, to alter or improve the designs or specifications of the products described herein without notice.



### Recommended Installation



- 1 Strainer
- 2 Shutoff Valves
- 3 Pressure Reducer
- 4 Safety Valve
- 5 Pressure Gauge
- 6 Sense Line EO8
- 7 Leakage Line G 1/4 (option)

Sense line connection 10 - 20 x DN behind the valve