

Flow Controller, small model with indicator flag, impeller or ball, with one glass
DA 1.10 up to 280 °C, DA 1.30 up to 80 °C, DA 1.40 up to 100 °C

Technical Data

Connection G 3/8 - 3/4
Nominal Pressure PN 16 - 40

Description

Flow indicators fitted with indicating vane, impeller wheel or ball can be used to indicate the flow of liquids, gases (only DA 1.10 and DA 1.40) and biphasic fluids.

DA 1.10, DA 1.30 and DA 1.40 are small flow indicators with one sightglass. Body and cover are either cast or machined from the solid; internal components are manufactured from corrosion-resistant stainless steel and plastic.

DA 1.10 with internal indicating vane, for uniform flow direction:

- Horizontal or vertical installation
- No return spring
- If installed vertically, flow must be upward

DA 1.30 with impeller wheel, for uniform flow direction:

- Horizontal or vertical installation
- for small flow volumes ($v < 1$ m/s)

DA 1.40 with indicating ball, for uniform flow direction:

- Vertical installation
- Flow must be upward

Response threshold according to data sheet DA/2.1.061.1

STANDARD EQUIPMENT

- Internal components made of stainless steel and plastic
- Soda lime glass

OPTIONS

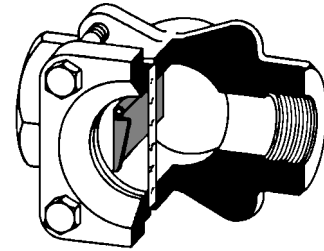
- Various seal materials suitable for your medium
- PTFE indicating vane or ball
- Borosilicate glass
- Special versions on request

Operating instructions, Know How and Safety instructions must be observed.

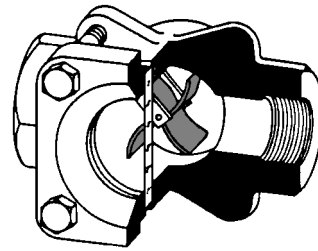
The pressure has always been indicated as overpressure.

We reserve the right to alter technical specifications without notice.

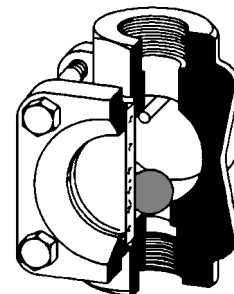
DA 1.10



DA 1.30



DA 1.40



Flow Controller, small model with indicator flag, impeller or ball, with one glass
 DA 1.10 up to 280 °C, DA 1.30 up to 80 °C, DA 1.40 up to 100 °C

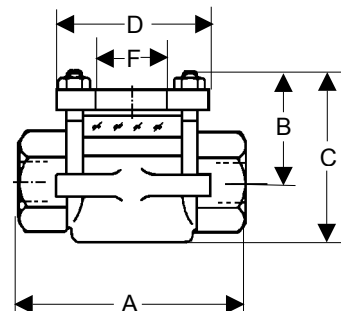
Materials DA 1.10			
Temperature		150 °C	280 °C
Body	PN 16	grey cast iron	grey cast iron
	PN 25 - 40	C 22.8	C 22.8
	PN 16 - 40	CrNiMo-steel	CrNiMo-steel
Seal		Nova Universal	Graphit
Glass		soda lime glass	maxos glass
Internals		CrNiMo-steel	CrNiMo-steel
Screws		5.6 zincd	5.6 zincd

Materials DA 1.30			
Temperature		80 °C	
Body	PN 16	grey cast iron	
	PN 25 - 40	C 22.8	
	PN 16 - 40	CrNiMo-steel	
Seal		Nova Universal	
Glass		soda lime glass	
		optional: maxos glass	
Internals		CrNiMo-Stahl und PBTP	
Screws		5.6 zincd	

Materials			
Temperature		100 °C	
Body	PN 16	grey cast iron	
	PN 25 - 40	C22.8	
	PN 16 - 40	CrNiMo-steel	
Seal		Nova Universal	
Glass		soda lime glass	
		optional: maxos glass	
Internals		CrNiMo-steel and PA	
Screws		5.6 zincd	

Dimensions [mm]				
size	nominal pressure	nominal diameter G		
		3/8	1/2	3/4
A	PN 16	100	100	100
	PN 25/40	82	82	82
B		50	50	50
C		75	75	75
D	PN 16	□ 72	□ 72	□ 72
	PN 25/40	ø 90	ø 90	ø 90
F		ø 40	ø 40	ø 40

Weights [kg]			
nominal pressure	nominal diameter G		
	3/8	1/2	3/4
PN 16	1.4	1.4	1.4
PN 25/40	2.3	2.3	2.3



Special designs on request.
 The pressure has always been indicated as overpressure.
 Mankenberg reserves the right, to alter or improve the designs or specifications of the products described herein without notice.

**WIR REGELN DAS SCHON
 FIRMLY IN CONTROL**

